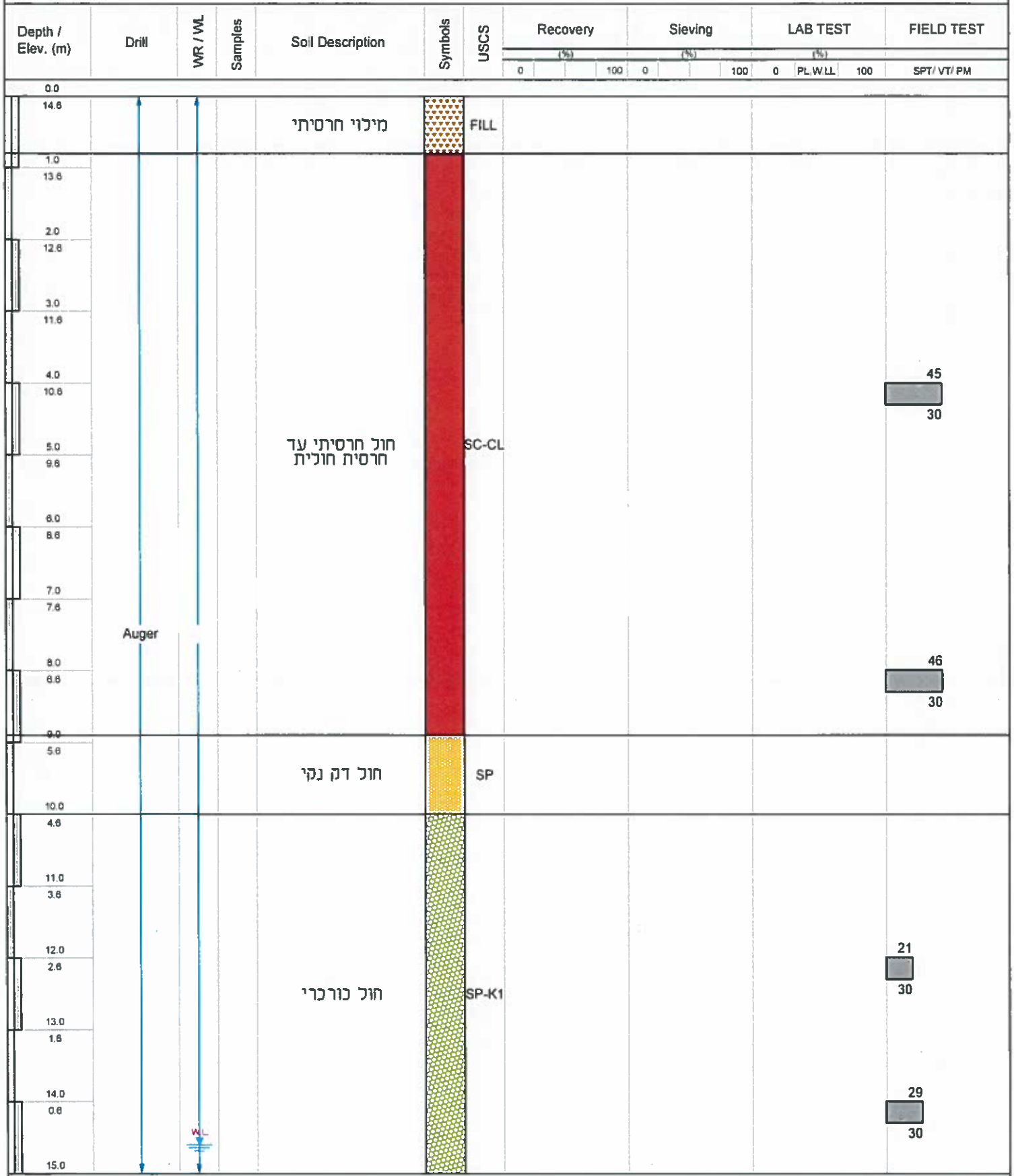


Project Name:	חניון לאופניים	Date started:	08.08.2018	Client:	רכבת ישראל
Borehole:	ק-1	Date finished:	08.08.2018	Elevation:	14.6
Project Number:	205902	Drilling Contractor:	צ'צ'יק	G W Table (m):	14.6
Location:		Checked by:	אגסי רימון	Total Depth (m):	25
Coordinates (x,y):	0:0	Supervised by:		Vertical Scale:	1:100



<b>SPT (blows/penetration)</b>  N Penetration Max Min VT (KPa)	<b>Atterberg limits</b> W LL PL LL <b>Sieve analysis</b> G   S   F	<b>Fines Sand Gravel</b> F S G	<b>RQD</b> 	<b>Recovery</b> 
--	--	---	----------------	---------------------

Project Name:	חניון לאופניים	Date started:	08.08.2018	Client:	רכבת ישראל
Borehole:	ק-1	Date finished:	08.08.2018	Elevation:	14.6
Project Number:	205902	Drilling Contractor:	צ'צ'ק	G W Table (m):	14.6
Location:		Checked by:	אגסי רימון	Total Depth (m):	25
Coordinates (x,y):	0:0	Supervised by:		Vertical Scale:	1:100

Depth / Elev. (m)	Drill	WR / WL	Samples	Soil Description	Symbols	USCS	Recovery (%)		Sieving (%)		LAB TEST (%)		FIELD TEST
							0	100	0	100	0	PL, W, LL	100
15.0 -0.4	Auger	WL		חול נורכרי		SP-K1							15 30
16.0 -1.4													19 30
17.0 -2.4													
18.0 -3.4	Auger			חול עם דקים מניל 7-12% דקים		SM							19 30
19.0 -4.4													
20.0 -5.4													20 30
21.0 -6.4													
22.0 -7.4													
23.0 -8.4	Auger			חול חרסיתי המניל 12-20% דקים		SC							45 30
24.0 -9.4													
25.0 -10.4													45 30
26.0 -11.4													
27.0 -12.4													
28.0 -13.4	Auger												
29.0 -14.4													
30.0 -15.4													

<b>SPT (blows/penetration)</b>  N Penetration Max Min VT (KPa)	<b>Atterberg limits</b> PL  LL <b>Sieve analysis</b> G S F	<b>Fines Sand Gravel</b> F S G <b>RQD</b>   <b>Recovery</b> 
--	---	---