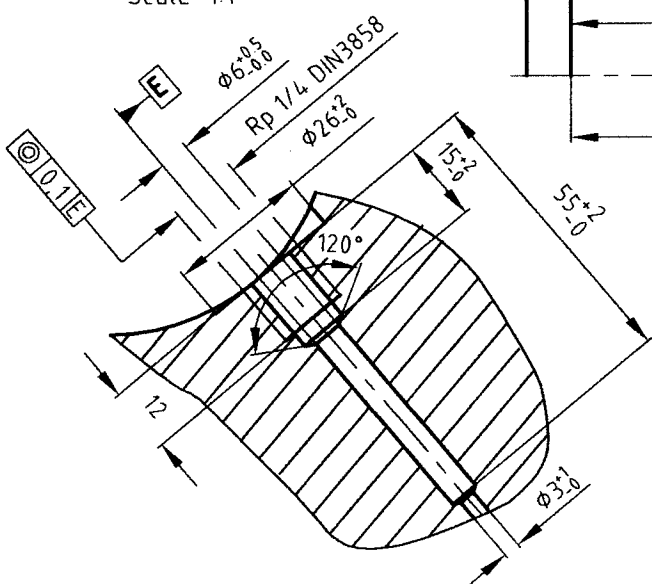


DETAIL B
Scale 1:1

DETAIL C
Scale 5:1

* - Revision from 08.06.2005

NOMINAL DIAMETER OF AXLE:
DGL-234mm, GA Co-Co-230mm
Solid wheel statically balanced,
admissible residual imbalance: 75 gm



1	HEXAGON HEAD PIPE PLUG DIN909 - R1/4- St	2
1	ER8 (**)	1
Quant'	Size	Material
ISRAEL RAILWAYS ROLLING STOCK DIVISION		
Name	Date	Draw' name
	14.10.04	SOLID WHEEL φ 1016
	Drawn	(For Diesel Locomotive Co-Co)
	Verified	
Scale 1:2		APPENDIX 12
Part of Part of Technical Specification No M-04-48E		
(**) - Last revision from 26.11.2008		