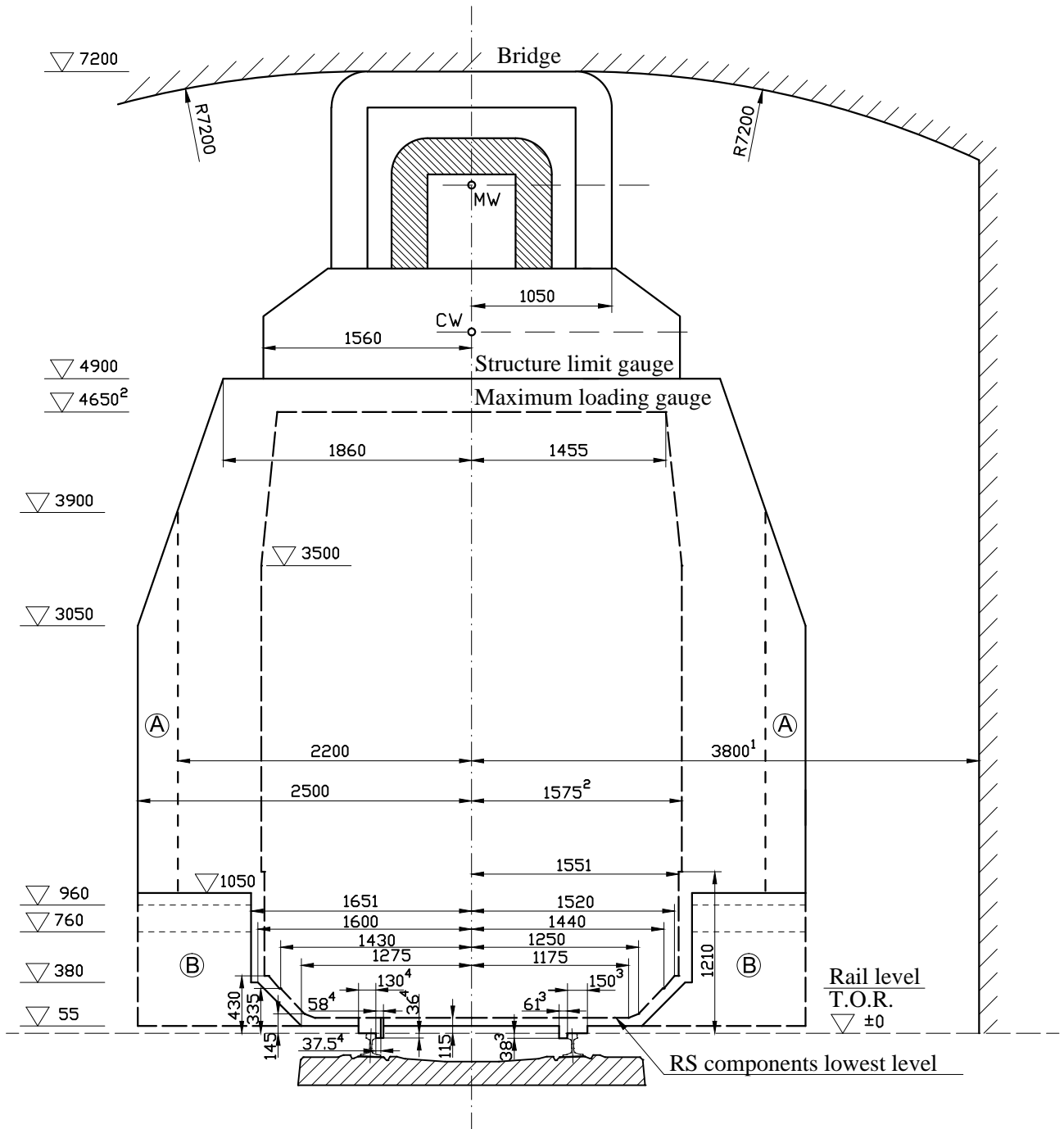


# Standard gauge ISR



<sup>1</sup> 3.800 m - for permissible speed greater than 160 km/h up to 250 km/h.

3.300 m - for speed greater than 60 km/h up to 160 km/h.

<sup>2</sup> 3.000 m - for speed up to 60 km/h on the secondary lines, station and marshal yard lines.

<sup>2</sup> Dimensions for new rolling stock .For existing rolling stock high and wide of maximum loading gauge for coach/loco - 4.750 m and 1.660 m.

<sup>3</sup> Dimensions for Infrastructure gauge.

<sup>4</sup> Dimensions for Rolling stock static gauge.

(A) Area between tracks or outside of track for signaling equipment.

(B) Area for passenger platforms, ramps and signaling systems.

Comments:

1. Dimensions on this sketch for straight line only.

2. Calculation of this dimensions in curve (see technical rules ISR).

3. Location of structures on the passengers platforms in relation to terminal tracks (see technical program for passenger station ISR).

4. All basic dimension of the ISR infrastructure reference profile follows the EN 15273 standard.

5. The ISR infrastructure gauge refers to GC Reference Profile.